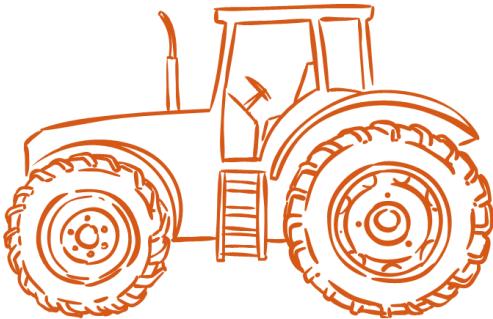


Tractor Safety

This is not a substitute for the operators' manual.
Please use the owners' manual specific to your vehicle/machinery



Hazards

- Rollovers=overtorns
- Runovers
- Entanglements
- Falls
- Roadway hazards

Maintenance

- Follow the operator's manual specific for your tractor
- Clean the radiator
- Check and tighten the wheel bolts and secure pins and connectors
- Grease the tractor's grease points
- Check/Replace the filters at the recommended intervals
- Change engine/transmission/axle oil at the recommended intervals

Daily Inspection

- Tires
- Cab / ROPS / Seatbelt
- Markings/signs/lights
- Controls / Attachments
- Steps – clean no mud or debris
- Fluid leaks

Check worksite

- Steep terrains
- Unstable/Uneven grounds
- Overhead power lines
- Buried utilities – water, cable, gas...

Entering/Exiting

- Face the tractor with both hands on the grab bars
- Never use the control levers as grab bars
- Keep all the surfaces clean
- Before leaving the operator seat lower the attachments, set the parking brake, and turn off the engine

Safe practices

- Operate the tractor from the operator's compartment
- Securely fasten your seatbelt if the tractor has a ROPS (Rollover Protective Structure)
- Avoid operating a tractor near ditches, embankments, and holes – uneven grounds (one foot away for every foot drop)
- Reduce speed when turning, crossing slopes, and on rough, slick or muddy surfaces
- Stay off slopes too steep for safe operation. If necessary, back up a slope and drive forward going downhill
- Watch where you are going, especially at the end of rows, on roads, and around trees
- Do not permit others to ride - One seat-one rider
- Operate the tractor smoothly – no jerky turns, starts, or stops
- Hitch only to the drawbar and hitch points recommended by the manufacturer
- Always shut down tractors before leaving the driver's seat: disengage the PTO and lower the implements to the ground, place all the controls in the neutral position, set the parking brakes, stop the engine, and remove the key
- When the tractor is stopped, set brakes securely, and use park lock if available
- When operating on roadways, use the lightning and SMV emblem, if possible, use an escort vehicle
- A slow-moving vehicle emblem is required for tractors traveling 25 mph or less

Tractor Pre-Operation Safety Checklist*

Tires	<input type="checkbox"/>	Proper inflation
	<input type="checkbox"/>	No visible damage
Three-point hitch	<input type="checkbox"/>	Securely fastened
PTO	<input type="checkbox"/>	Guarded/master shield
SMV sign / markings	<input type="checkbox"/>	Clean and visible
Signals/lights	<input type="checkbox"/>	Working and visible
ROPS/Seatbelt	<input type="checkbox"/>	Check seatbelt, if there is ROPS fasten your seatbelt
	<input type="checkbox"/>	If there is a foldable ROPS make sure it is in upright position and properly fastened
Fluids	<input type="checkbox"/>	Engine /transmission oil
	<input type="checkbox"/>	Engine coolant
	<input type="checkbox"/>	Fuel
Hydraulics/transmission	<input type="checkbox"/>	No sign of hydraulic leak
	<input type="checkbox"/>	No sign of transmission leak
Steps/handrail/cab	<input type="checkbox"/>	No mud, no trash
Overall	<input type="checkbox"/>	Walk around and check any unsafe situation, worksite hazards, and bystanders

*The checklist is based on OSHA's Tractor Pre-Use Checklist. Available online
https://www.osha.gov/sites/default/files/2018-12/fy11_sh-22318-11_Mod_5_TractorsChecklist.pdf